

Inside

LSU HEALTH SHREVEPORT

School of Medicine
School of Graduate Studies
School of Allied Health Professions
LSU Health Sciences Foundation

SUMMER/FALL 2019



COMING SOON: CENTER FOR MEDICAL EDUCATION AND WELLNESS

*Learn more about how you can support the future
of medical education at LSU Health Shreveport*



LSU Health
SHREVEPORT

DIVERSITY CELEBRATION DAY

The annual Diversity Matters Celebration Day hosted by the Office of Diversity Affairs featured displays created by LSU Health Shreveport students, faculty, residents, fellows and staff that celebrated their cultures from around the world. The event also highlighted the music, dance and cuisine of different heritages and cultures represented on campus. This year's Guest Speaker was Dr. Horacio D'Agostino, Chairman of the Department of Radiology.



Inside LSU Health Shreveport is published three times a year by the Department of Communications and LSU Health Sciences Foundation Shreveport on behalf of the School of Medicine, School of Graduate Studies, School of Allied Health Professions and LSUHS Foundation.

SUMMER/FALL 2019

DEAN, SCHOOL OF MEDICINE
David F. Lewis, MD, MBA

DEAN, SCHOOL OF ALLIED HEALTH PROFESSIONS
Sharon Dunn, PT, PhD, OCS

DEAN, SCHOOL OF GRADUATE STUDIES
Christopher Kevil, PhD



We recently ended our 2018-2019 fiscal year with numerous significant accomplishments. I am pleased to share just a few of the most recent ones.

In March, we celebrated our largest Match Day in history with 98.3% of our graduating School of Medicine students matching to a PGY1 residency program, exceeding the national average of 79.6%. In addition, all of our 122 residency and fellowship positions at LSU Health Shreveport were filled. Our 192 graduates from the Schools of Allied Health Professions, Graduate Studies and Medicine were celebrated in May at their graduation ceremony, where we were honored to have Governor John Bel Edwards give the commencement address and to have many members of the LSU Board of Supervisors and Louisiana Board of Regents in attendance.

The most recent Louisiana State Legislative Session concluded with outstanding news for our institution. Two major noteworthy achievements are that our baseline funding level remained stable at \$58.2 million dollars and capital outlay dollars were secured for the Center for Medical Education and Wellness building. This new building project totals \$56 million and requires \$28 million to come from the state and \$28 million from private sources. (You can read more about the Center for Medical Education and Wellness on page 8.) I extend my sincere thanks to Governor John Bel Edwards and the honorable members of the Legislature from throughout the state for their continued support of our institution.

Exciting growth and developments continue to occur within our research enterprise. Federal, state and private grant funding increased by 47% over last year and more than \$1.3 million in licensing revenue was received in this past fiscal year. We recently announced our partnership with Louisiana Tech University to establish the Center for Tissue Engineering and Regenerative Medicine (CTERM) thanks to support and approval from the LSU Board of Supervisors, the University of Louisiana System Board of Supervisors, and the Louisiana Board of Regents. Our first class of the new Cardiovascular Undergraduate Research Initiative fOr Underrepresented Students (CURIUS) program was welcomed to campus in June to spend the summer conducting research alongside a LSUHS faculty mentor. The CURIUS program was made possible by an R25 Research Education Program grant from the National Institutes of Health.

Our new fiscal and academic year are off to a great start to include the launch of a new website which better represents our vibrant and growing institution. As always, thank you for your continued dedication to and support of our health sciences center.

Sincerely,

G.E. Ghali, DDS MD FACS FRCS(Ed)
Chancellor

content

FEATURES

- 8 COMING SOON: THE CENTER FOR MEDICAL EDUCATION AND WELLNESS
Much more than a new building, the Center for Medical Education and Wellness will support growing class sizes and our plans to address a looming physician shortage
- 14 AN EVENING FOR HEALERS
Highlights from the 9th annual *An Evening for Healers* event and a special thank you to our generous sponsors

IN THIS ISSUE

- 10 WHITE COAT CEREMONY
Second-year students received their white coats and celebrated a milestone in their medical education with family, friends and faculty
- 11 3 MILES FOR FREE SMILES
The 3rd annual 3 Miles for Free Smiles race raised \$12,000 for local cleft lip and palate patients and their families
- 16 CONGRATULATIONS, CLASS OF 2019!
Graduating medical students celebrated Match Day and Louisiana Governor John Bel Edwards attended graduation to give the commencement address

IN EVERY ISSUE

- 2 RESEARCH WRAP
Updates and new developments in research at LSUHS
- 14 CLASS NOTES
Alumni news & events
- 17 NEW & NOTEWORTHY
- 22 FACULTY HONORS & ELECTIONS
- 23 IN MEMORIAM
- 24 CAMPUS & COMMUNITY

PHOTOGRAPHY

Carlton Harp
Randy Inderman
Lawrence Lea
Lisa Babin
Megan Strecker

COURTESY PHOTOS

Louisiana State Medical Society
School of Allied Health Professions
A2P Photography & ABJ Productions
Ochsner Health System
LSUHS AHEC Office
Gosslee & Associates Inc.
Dept. of Oral & Maxillofacial Surgery
LSU Health Sciences Foundation Shreveport

LSU Health Shreveport and Louisiana Tech Partner to Establish New Research Center



*Pictured: **Dr. Mary Calderera-Moore**, Assistant Professor of Biomedical Engineering at Louisiana Tech University and CTERM Co-Director; **Dr. Les Guice**, President of Louisiana Tech University; **Dr. G. E. Ghali**, Chancellor of LSU Health Shreveport; **Dr. Chris Kevil**, Vice Chancellor for Research at LSU Health Shreveport; and **Dr. Yufeng Dong**, Associate Professor and Director of Translational Research in the Dept. of Orthopaedic Surgery at LSUHS and CTERM Co-Director*

The LSU and University of Louisiana System Board of Supervisors and the Louisiana Board of Regents have provided one-year conditional approval of the request to establish the Center for Tissue Engineering and Regenerative Medicine (CTERM), a collaborative research endeavor between LSU Health Shreveport and Louisiana Tech University.

The Center for Tissue Engineering and Regenerative Medicine (CTERM) will focus on the development of cell-based and tissue-engineering therapies to combat tissue inflammation, damage, and loss associated with complications of metabolic syndrome or trauma injury. Specifically, the goal of the CTERM is to produce clinically relevant stem cells and biomaterial scaffolds to generate useful cell-based and tissue-based therapies that can combat the loss of healthy tissue associated with chronic diseases.

A multi-disciplinary team of researchers from LSU Health Shreveport and Louisiana Tech will combine their expertise to study chronic health issues that affect the region and parishes across the state, including diabetes, heart disease and cancer. The CTERM will also offer an ideal environment to train future scientists, engineers and clinicians for careers in stem cell biology, tissue engineering and regenerative medicine.

"We are grateful for the approval of the governing boards of LSU and the UL System. This collaboration holds tremendous potential for addressing the issue of tissue loss associated with chronic disease, as well as providing an innovative genre of scientific training," stated Dr. Chris Kevil, Vice Chancellor for Research at LSU Health Shreveport.

"This new Center is directly aligned with our commitment to providing the highest quality research, education, and economic development for our state and nation," said Dr. Les Guice, President of Louisiana Tech University. "This formal partnership has grown from collaborations between our two institutions over several years, and it represents an opportunity to capitalize on the respective strengths of faculty and staff at both institutions."

CTERM supports an already established collaborative relationship between LSUHS and Louisiana Tech, and will enhance opportunities available to students, researchers and clinicians in a critical area of basic and translational research.

CCDS Receives Continued Approval as Center of Excellence

At the February Louisiana Board of Regents meeting, the Board unanimously approved the continuation of the Center for Cardiovascular Diseases and Sciences (CCDS) at LSU Health Shreveport as a Center of Excellence of research and innovation.

A Center of Excellence is uniquely focused and specific in its designation. It may consist of a unit, program, or functional area that, as a Center, is accountable to higher expectation of performance and productivity, including contributions to the body of knowledge and to economic development, placement of graduates, generation of external interest and support, formation of joint ventures and partnerships, and positive recognition of the area and its faculty and students. A Center of Excellence must demonstrate that it is a statewide leader in the area of designation and must address how it does so in a proposal to the Board of Regents. With the designation as a Center of Excellence comes the responsibility for leadership within the state and, if applicable, beyond. Implied in the designation is a commitment to concentrate and build on this strength by advancing knowledge and skills, thereby creating better opportunities for the citizens of the State. The Center is expected to serve as a resource to support similar programs offered by other institutions. LSU Health Shreveport is home to three Centers of Excellence: The Center for Cardiovascular Diseases and Sciences (CCDS), the Feist-Weiller Cancer Center (FWCC) and the Center of Excellence for Arthritis and Rheumatology (CEAR).



LSU Health Shreveport
CENTER FOR CARDIOVASCULAR
DISEASES AND SCIENCES

\$1.8 Million R01 Grant Will Support Research to Study Sigmar1 Protein and its Function in Regulating Lipid Metabolism

A lipid is a fat or fat-like substance in the blood. Lipid metabolism is the combining of functional lipids in cells and the breaking-down or storing of fats for energy.

Md. Shenuarin Bhuiyan, PhD, Assistant Professor of Pathology, has received an R01 grant from the National Institutes of Health. Dr. Bhuiyan's new \$1,825,000 5-year grant will fund his research project, "Sigmar1 in lipid metabolism." Obesity, diabetes and heart diseases are characterized by metabolic dysfunction and affect one-third of adults in the United States. Dr. Bhuiyan's proposal will investigate a novel function of protein named Sigma-1 receptor (Sigmar1) in regulating lipid metabolism in baseline and in response to diet-induced obesity. The goal of this application is to discover a novel lipid metabolism pathway regulated by Sigmar1 and identify a therapeutic target to prevent lipid abnormalities in obesity, which is expected to help reverse the impact of obesity on cardiovascular disease risk. Obesity is associated with ectopic deposition of lipid (steatosis) in different organs including the pancreas, kidneys, blood vessels, liver, skeletal muscle, and heart. The accumulation of excessive toxic lipid species alters cellular signaling, promotes mitochondrial dysfunction, and increases cellular death in these organs.



Dr. Bhuiyan

"We became interested in uncovering the molecular function of Sigmar1 proteins in metabolism as it was reported to be associated with lipid-containing micro-domains suggesting a potential role in the pathophysiology of metabolic diseases. We found that Sigmar1 is abundantly expressed in the heart, where fatty acid oxidation serves as the primary source of energy, approximately 70%," said Dr. Bhuiyan. "Our preliminary data central to this proposal identifies tissue-intrinsic function of Sigmar1 as an essential regulator of lipid metabolism under the normal physiological condition and in response to diet induced obesity stress."

To explain the molecular function of Sigmar1 under physiological and pathophysiological conditions, Dr. Bhuiyan's laboratory recently generated a cardiac-specific Sigmar1 transgenic mouse for overexpression, and cardiac-specific Sigmar1 conditional knockout mouse models. The central hypothesis of the research project proposal is that Sigmar1-dependent activation of lipid metabolism is protective against metabolic stress-induced cardiac dysfunction and pathological remodeling.

Dr. Bhuiyan's research will aim to test this hypothesis by pursuing three specific aims:

- Aim 1 will determine a novel function for Sigmar1 in regulating lipid metabolism.
- Aim 2 will determine the role of Sigmar1 in metabolic stress in mouse model of diet-induced obesity.
- Aim 3 will determine the molecular mechanism of Sigmar1's function in lipid metabolism through mitochondrial fatty acid uptake and oxidation.

Dr. Bhuiyan's lab will use integrated molecular, genetic, and functional approaches in conjunction with genetically modified mice to determine the direct involvement, and define the molecular mechanisms of Sigmar1's role in lipid metabolism. This proposed project will identify a novel therapeutic target to regulate mitochondrial fatty acid oxidation and discover a novel molecular mechanism of cellular protection in diet-induced obesity.

AHA Go Red for Women Luncheon



Researchers from the Center for Cardiovascular Diseases and Sciences represented at the AHA Go Red for Women Luncheon in Shreveport. Zaki Al Yafeai, Dr. Celeste Wu, Dr. Shafiul Alam and Alexandre Do Couto E Silva were recognized as American Heart Association Fellowship recipients. Heart disease is the leading cause of death in both men and women, and accounts for 1 in 4 deaths every year. It is the mission of the Center for Cardiovascular Diseases and Sciences at LSU Health Shreveport to advance the understanding of cardiovascular disease and develop the next generation of basic and clinical science investigators to one day be able to change this statistic. **Since 1980, the AHA has granted over \$8 million to fund research in Northwest Louisiana.**

Bone Tissue Regeneration Using Stem Cells: Research to Help Patients Heal Faster After Experiencing Bone Loss

Yufeng Dong, MD, PhD, Assistant Professor of Orthopaedic Surgery, has received a \$1,633,905 R01 grant from the National Institute of Arthritis and Musculoskeletal and Skin Diseases of the NIH for his five-year project studying the treatment of bone loss and bone injuries with modified tissue stem cells.

“The goal of this NIH-supported five-year study is to use Notch signaling proteins to modify patient bone marrow derived mesenchymal stem cells (MSCs) and transplant these cells back to the same patient for rapid large bone defect repair, which in turn will help patients heal more quickly after experiencing bone loss,” explained Dr. Dong.

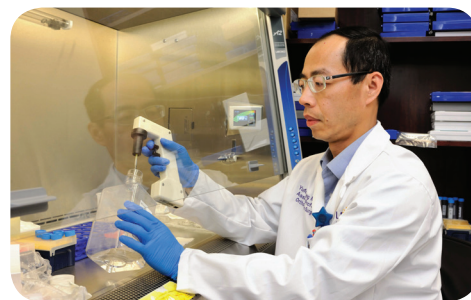
Mesenchymal stem cells (MSCs) are a type of stem cells found in bone marrow that have been shown to be capable of making other cells, like bone, cartilage and fat cells. Dr. Dong’s project will first purify stem cells from patient bone marrow, and then make them quickly become vessel-forming and bone-forming cells after transplantation.

At the completion of this study, Dr. Dong and his team will likely be able to accomplish the following:

1. Identify an optimized stem cell population for enhanced vascularization in bone tissue regeneration.
2. Develop a novel therapeutic approach that would be immediately applicable for patients with massive bone loss, including bone loss secondary to trauma, infectious or oncologic etiologies, bone loss around an artificial joint in adult bone reconstruction, and serve as an adjuvant in the treatment of pediatric skeletal deformities and repairs.

Dr. Dong is the Principle Investigator of the project. The Co-Investigators include: **Chris Kevil, PhD**, Professor and expert in angiogenesis in the Department of Pathology; **Shane Barton, MD**, Chairman of Orthopaedic Surgery and Thomas Norris MD Endowed Professor; and **Hicham Drissi, PhD**, Professor of Orthopaedic Surgery and Cell Biology at Emory University in Atlanta.

Dr. Dong’s project is titled, “Notch-enriched Mesenchymal Stromal Cells for Bone Allograft Repair.” This is his first NIH R01 grant.



Dr. Dong

BioStart Program Welcomes New Interns



The BioStart Program recently welcomed the 2019-2020 class of interns. The BioStart Program, which is overseen by Kenneth McMartin, PhD, Professor of Pharmacology, Toxicology and Neuroscience, offers a research experience to selected seniors of Southwood High School’s BioTechnology Magnet Program. During their fall semester the senior students are paired with a LSU Health Shreveport Faculty Mentor and work in their research laboratory daily for about four months. The BioStart Program hopes to increase the quality and quantity of area graduates in the medical, biotechnology and life sciences fields with the expectation that many of these students will earn advanced degrees and participate in the regional workforce as medical professionals, research scientists, teachers and technicians. The LSU Health Sciences Foundation in Shreveport, the Biomedical Research Foundation, and other generous partners provide funding for the BioStart Program. The students will officially begin working with their mentors on their research projects in August when school starts back and will share their projects at a poster session at the end of the semester.

Southwood Student: SheKeira Rice
Mentor: Xiao-Hong Lu, PhD, Assistant Professor of Pharmacology, Toxicology and Neuroscience

Southwood Student: Arizona Minister
Mentor: David McGee, PhD, Associate Professor of Microbiology and Immunology

Southwood Student: Zion Hines
Mentor: Hyung Nam, PhD, Assistant Professor of Pharmacology, Toxicology and Neuroscience

Southwood Student: Miranda Thomas
Mentor: Christopher Pattillo, PhD, Professor of Molecular and Cellular Physiology

Southwood Student: Dakota Ivy
Mentor: Christopher Schmoutz, PhD, Assistant Professor of Pharmacology, Toxicology and Neuroscience

Southwood Student: Chaniya Simpson
Mentor: Gulshan Sunavala, PhD, Assistant Professor of Cellular Biology and Anatomy

Southwood Student: DaNeis Brown
Mentor: Yunfeng Zhao, PhD, Associate Professor of Pharmacology, Toxicology and Neuroscience

Cellular Antioxidants Determine Vascular Remodeling



Dr. Pattillo

Christopher Pattillo, PhD, Associate Professor of Molecular and Cellular Physiology, has received a \$1,825,000 R01 grant from the National Heart, Lung, and Blood Institute of the NIH for his five-year project studying the remodeling of blood vessels following arterial blockage, "Cellular Reductive State Regulates Arteriogenesis." This is Dr. Pattillo's first NIH R01 grant.

"The goal of this NIH-supported five-year study is to determine the levels of antioxidants to drive maximal blood vessel remodeling in response to a vascular blockage, such as peripheral artery disease," explained Dr. Pattillo.

The gradual occlusion of blood vessels such as that reported in peripheral artery disease is increasing in frequency, due to a variety of risk factors including several cardiovascular pathologies such as diabetes, obesity, etc. This project addresses the novel relationship between the antioxidant glutathione, its oxidized form (GSSG) and the protein modifications (glutathionylation) that influence the progression of arteriogenesis following the occlusion of conduit arteries. The proposed research will uncover the underlying mechanisms by which levels of glutathione and corresponding protein modification can be manipulated to enhance the progression of arteriogenesis following ischemic insult; providing potential avenues to the development of novel vascular therapeutics.

Successful completion of this project will provide new insights into the mechanism by which glutathione regulates arteriogenesis in a physiologic range of GSH:GSSG following arterial ligation. Such information could be the basis for new intervention therapies developed to precisely control arteriogenesis following artery blockage. Enhancing the vascular remodeling potential of tissue through manipulation of glutathione and protein glutathionylation may represent a critical first step in reducing tissue damage due to vascular occlusion.

Dr. Pattillo is the Principle Investigator of the project. **A. Wayne Orr, PhD**, Professor and Director of the Research Division in the Department of Pathology and an expert in shear mediated endothelial biology, is a co-investigator.

LSUHS Faculty Awarded Grant to Research Possible Treatment for Rare Genetic Disorder

Rodney Shackelford, DO, PhD, Assistant Professor of Pathology, has been awarded a \$40,000 grant from the A-T Children's Project for his research project titled, "Pharmacologic Correction of the Cellular Sulfide Pool as a Treatment for Ataxia-Telangiectasia," which will officially begin on August 1, 2019.



Dr. Shackelford

Ataxia-telangiectasia mutated (A-T) is a rare genetic autosomal recessive disorder, which means that two copies of an abnormal gene are present and making the disorder develop. A-T is a disease characterized by progressive ataxia (a group of uncommon neurological disorders characterized by problems with balance and coordination) secondary to cerebellar Purkinje cell loss, pre-mature aging, oculocutaneous telangiectasias (visibly dilated blood vessels in the eye), immune dysfunction, increased cellular oxidative stress, and an approximately one-thousand fold increased cancer risk, particularly for leukemias (blood cancers).

The clinical course of A-T is progressive and unrelenting, with most affected individuals living only into their early twenties, often dying from leukemia, pneumonia, failure to thrive, or choking on food due to poor motor function. At the molecular level, A-T results from loss of the ataxia-telangiectasia mutated (ATM) gene product function on chromosome eleven. ATM plays a central role in the sensing and repair of double-stranded DNA breaks, cellular responses to oxidative stress and subsequent p53 induction and cellular checkpoint initiation, and the regulation of mitochondrial function. Dysregulated ATM activity has also been implicated in Type II Diabetes. The cause of A-T is the inability of A-T cells to efficiently repair double-stranded DNA breaks, resulting in persistent broken DNA, increased mutagenesis, cell death, and an elevated cancer risk.

Dr. Shackelford's work involves identifying pharmacologic agents that will lower double-stranded DNA breaks in A-T cells to increase cell viability and ultimately lead to a treatment for A-T.

Inaugural Research Celebration: LSUHS Celebrates Growth and Accomplishments in Research

The next generation of doctors and scientists are being trained and important discoveries are being made that will impact how diseases are treated or cured in the future at LSU Health Shreveport. Leadership, faculty, staff and students celebrated the growth and accomplishments of research initiatives and funding at LSU Health Shreveport at the inaugural Research Celebration event on Feb. 28.



By The Numbers:

- Federal, State & Private Grants were up by 47% in 2018 over 2017
- Total Grant Funding for 2018 was \$14,814,174
- 353 active clinical studies taking place on campus
- More than 100 extramural grant submissions
- Five start-up companies created to license and commercialize LSUHS technologies
- Nine USPTO Patent Notices of allowance for LSUHS technologies
- 34 new Pharma studies sponsored by a pharmaceutical company



Faculty members who have excelled in various areas of research were also honored at the event.



A. Wayne Orr, PhD, Director of the Center for Cardiovascular Diseases and Sciences, received the **Excellence in Extramural Funding** award for having three concurrent R01 grants from the National Institutes of Health that support his cardiovascular disease research efforts.

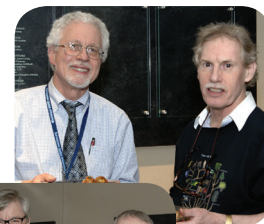


Glenn Mills, MD, Director of Medical Service at Feist-Weiller Cancer Center, received the **Excellence in Translational Research** award for his contributions to cancer treatment and research.



Robert Rhoads, PhD, Professor Emeritus and former Chair of the Department of Biochemistry and Molecular Biology, received the **Excellence in Innovation** award for his numerous patents made possible by discoveries in his lab.

Also highlighted at the event were exciting things coming up in the near future for the Office of Research, including the pending COBRE Center for Immunology, Inflammation and Infectious Disease (CI3D) led by Principle Investigator **Dr. Andrew Yurochko**; the Cardiovascular Undergraduate Research Initiative fOr Underrepresented Students (**CURIOUS**) Program, an NIH-funded summer research program for underrepresented undergraduate students interested in pursuing research as part of their scientific or clinical career goals led by Principle Investigator **Dr. Karen Stokes**; and research collaborations with Ochsner Health System, including a joint \$10 million Department of Defense grant submitted on organ health and transplantation.



Pivotal Clinical Trial Studying Treatment of COPD Taking Place in Shreveport

LSU Health Shreveport physicians are currently leading the VENT-AVOID Trial at Ochsner LSU Health Shreveport Academic Medical Center. The VENT-AVOID Trial is a pivotal clinical trial sponsored by ALung Technologies (Pittsburgh, Pa.) that is the world's first trial of extracorporeal carbon dioxide removal (ECCO2R) for treating patients with COPD exacerbations. Ochsner LSU Health Shreveport is the only VENT-AVOID Trial site in Louisiana, and is one of 31 trial locations in the United States. The Principal Investigator for the site is **L. Keith Scott, MD, MSc, FCCM**, Professor of Medicine, Pediatrics, and Anesthesiology, and Chief of the Section of Pediatric Pulmonary Medicine at LSU Health Shreveport.

The VENT-AVOID Trial is a prospective, multi-center, randomized, controlled, two-arm trial of the Hemolung Respiratory Assist System (Hemolung RAS), an investigational medical device that provides low-flow extracorporeal CO₂ removal, or ECCO₂R, for the treatment of adults with acute hypercapnic respiratory failure due to a severe exacerbation of chronic obstructive pulmonary disease (COPD). The VENT-AVOID Trial is a landmark trial of ECCO₂R for treating patients with COPD exacerbations.

The Hemolung RAS is a dialysis-like device that provides extracorporeal lung support using a 15.5 French central venous catheter for patients experiencing acute hypercapnic respiratory failure. The VENT-AVOID Trial will evaluate the safety and efficacy of the Hemolung RAS in providing ECCO₂R as an alternative or supplement to invasive mechanical ventilation for patients experiencing severe COPD exacerbations. The trial is being conducted under an Investigational Device Exemption (IDE) from the U.S. Food and Drug Administration.

Eligible patients will be randomized to one of two treatment arms. Patients in the first treatment arm (the Investigational Arm) will receive lung support with the Hemolung RAS plus standard-of-care mechanical ventilation. Patients in the second treatment arm (the Control Arm) will receive standard-of-care mechanical ventilation alone. The primary outcome measure for the trial is the number of ventilator-free days measured from the time the patient is randomized to a treatment arm through 60 days post-randomization.

ALung Technologies, a leading developer of advanced medical devices for treating respiratory failure, like their Hemolung RAS, recently announced a major milestone in the U.S. based VENT-AVOID clinical trial. Following its first scheduled review of safety data from the initial 31 subjects enrolled, the independent Data and Safety Monitoring Board (DSMB) of the VENT-AVOID trial recommended continuation of the trial without modification.

According to the American Lung Association, COPD affects 30 million Americans and is the third leading cause of death in the United States behind cancer and heart disease. Acute exacerbations, defined as a sudden worsening of COPD symptoms, are a major cause of morbidity and mortality in COPD patients.

For patients with severe exacerbations, high levels of carbon dioxide can result in respiratory failure and the need for intubation and mechanical ventilation as life saving measures. ECCO₂R therapy with the Hemolung RAS allows carbon dioxide to be removed from the blood independently of the lungs with the aim of facilitating the avoidance or reduction of intubation and invasive mechanical ventilation.

For more information about the VENT-AVOID Trial, visit clinicaltrials.gov/ct2/show/NCT03255057.

Interested participants can also email lscott2@lsuhsc.edu or ksmit9@lsuhsc.edu. To see all clinical trials taking place at LSU Health Shreveport, visit www.lsuhschreveport.edu/research/clinical-trials.

LSUHS and LifeShare Partner on Cellular Services Lab



LifeShare Blood Center in Shreveport opened its new Cellular Services Laboratory in May. This lab opens up additional medical treatment options for patients who can benefit from cellular therapy, a new kind of medicine that doesn't involve traditional approaches like pills or surgery. LSU Health Shreveport has signed on as the first of many partners to collaborate on this groundbreaking work. **Yuping Wang, MD**, Professor of Clinical Obstetrics and Gynecology, and Professor of Molecular and Cellular Physiology, helped train LifeShare lab staff on her patented techniques that will be utilized in the new laboratory.

Center for Medical Education and Wellness



A new building on the LSU Health Shreveport campus is so much more than just increasing the size of our institution. It is a hard-earned sign of a brighter future – a future that affects almost every citizen in north Louisiana due to the irreplaceable role that LSUHS plays in healthcare delivery, medical education and the economy.

As the first new building on campus since the School of Allied Health Professions opened in 2007, **the Center for Medical Education and Wellness** will accommodate growing class sizes of the medical school and select allied health profession programs, ensure compliance with the accrediting body guidelines for student wellness, study and storage space, and enhance faculty recruitment. The Center for Medical Education and Wellness is being made possible with a 50/50 public-private funding model. The Louisiana State Legislature recently approved \$28 million in state funding and more than \$9 million in private donations and pledges have been received.

The new Center for Medical Education and Wellness is critically important to our institution, local community and the state of Louisiana for many reasons, including:

- Increasing the ability for LSUHS to address the physician shortage. Louisiana has the 13th oldest physician workforce in the U.S. The Louisiana Health Works Commission found that 2,892 new Louisiana primary care physicians are needed by 2020 to replace retiring physicians and meet increasing healthcare demands. The population of those 65-years-old and older will double by 2030, which is also a contributing factor to the physician shortage.
- Providing more opportunities for young adults to achieve their dream of working in the medical field. We are facing an ongoing challenge of Louisiana's

brightest young adults moving out-of-state to complete their education. Increasing the number of spots available in other LSUHS programs, like the Physician Assistant and Physical Therapy programs in the School of Allied Health Professions, gives more students the opportunity to achieve their educational goals in north Louisiana.

- Providing a platform for strengthening the economic impact that LSU Health Shreveport has in our community. Currently, LSUHS is the fifth largest employer in Shreveport/Bossier City with an annual payroll of \$239,663,809 and an annual direct economic impact of almost \$600 million. Increasing the medical school class size will further impact the economy as each physician entering the workforce generates an average of \$2 million annually.
- Growing the institution to enhance the relevance of LSU Health Shreveport at the local, state and national level. To grow healthcare and bring in more dollars into our community, LSUHS must expand the options it provides to patients and students locally and globally, which requires this investment in our future.
- Enhancing technology and teaching spaces for students to reflect the learning and studying styles of today, and support LSU Health Shreveport's established standard of excellence in education.





For more than five decades, north Louisiana has taken pride in having the only medical school in the area, but the reality is that LSU Health Shreveport offers so much more. It is home to three professional schools: the School of Medicine, the School of Allied Health Professions and the School of Graduate Studies. Combine these schools with a graduate medical education (GME) training program with over 560 residents and fellows, \$14 million in extramural research grants, and expansive clinical care offerings and you have a true community gem. As one of only 142 academic medical centers in the United States, there is simply no denying that LSU Health Shreveport plays a key and irreplaceable role in the advancement of north Louisiana.

Highlights of the Center for Medical Education and Wellness:

- Large multi-use space auditorium for gatherings such as White Coat Ceremony, Family Day and Continuing Medical Education events
- Two assembly halls/large classrooms for lectures, presentations, and multi-purpose programming
- Small group rooms for student gatherings and studying
- Required student locker spaces
- Catering kitchen and dining area
- Recreation space
- Outdoor space
- Wellness/exercise space
- Offices for faculty and staff members
- IT support area to assist students
- Clinical exam rooms
- Standardized patient exam rooms and support spaces
- Operating room simulation suite (Adult, Pediatric, OB/GYN, and Neonatal simulation suites in multi-patient hospital settings)
- Debriefing rooms
- Clinical examination suite
- Large Skills Labs
- Small Skills Labs
- Total of five floors with top two floors shelled for future build-out



How can you support the Center for Medical Education and Wellness?

Every monetary gift brings us one-step closer to raising the \$28 million needed to match the approved state funding and opening the doors of the Center for Medical Education and Wellness! One-time gifts, pledges over five years, and the donation of assets are all welcomed and appreciated. The sooner the remaining private funds are raised, the sooner the building will be completed and we can begin seeing its impact in our community!

Gifts can be made online at www.lsuhsfoundation.org or by calling Kevin Flood, LSUHS Foundation President, at 318-861-0855 or Lisa Babin, LSUHS Executive Director of Public Affairs, Communications and Development, at 318-675-8769.

Naming opportunities are available.



Class of 2021 White Coat Ceremony

On Saturday, March 23, 121 LSU Health Shreveport School of Medicine second-year students received their cherished white coats. The Class of 2021 celebrated this milestone in their medical education with family, friends and LSU Health Shreveport faculty.

The White Coat Ceremony is a rite of passage for medical students. **Dr. Thomas C. Arnold**, Professor and Chairman of the Department of Emergency Medicine, was the guest speaker. LSUHS School of Medicine alumni including Dr. Thomas Arnold (Class of 1987), **Dr. Kevin Carter** (Class of 2004), **Dr. Mindie Kavanaugh** (Class of 2009), and **Dr. Jennifer Woerner** (Class of 2009), cloaked students with their white coats and presented them with their "Humanism in Medicine" pins. Following the cloaking and pin presentation, students read an encouraging letter from an alumni that was placed in the pocket of their white coat and recited an oath together as a class.

This was the 17th White Coat Ceremony held by LSU Health Shreveport. Today, many medical schools around the country host a White Coat Ceremony, an event symbolizing the transition from classroom to clinical learning and the importance of compassion while providing the very best technical health care to patients.

The white coat became a symbol of medicine and part of a doctor's wardrobe in the late 19th and early 20th century. Since that time it has been seen as a symbol of professionalism, care, and compassion towards patients. As a tradition and to help with distinguishing members of a medical team, students can be seen wearing short white coats, while physicians will wear longer, full-length white coats.

Special thank you to

The Office of the Chancellor, LSU Health Shreveport
The Office of the Dean, School of Medicine
Arnold P. Gold Foundation
The Women's Club
LSU Health Sciences Foundation Shreveport
LSUHS School of Medicine Alumni Association



Earlier this year, Shreveport Bossier Family Dental Care hosted the third annual 3 Miles for Free Smiles race to raise awareness and financial support for children born with cleft lip and cleft palate birth defects to help them receive life-saving surgeries. Two out of every 1,000 births result in the need for surgery to correct feeding problems, hearing problems and speech problems.

Proceeds from 3 Miles for Free Smiles are donated to the LSU Health Shreveport Foundation/Department of Oral & Maxillofacial Surgery Cleft Team and Shriners Hospitals for Children in Shreveport to cover the costs of cleft lip and cleft palate surgeries.

The race was inspired by a Shreveport Bossier Family Dental Care employee and their personal experience with cleft lip/palate.

"An employee of Shreveport Bossier Family Dental Care had a child who was born with cleft lip/palate, which exposed us to the struggles and multiple surgeries in which this family had to

endure," said Lindsey Trainer, Director of Marketing for Shreveport Bossier Family Dental Care. "We felt compelled to help and wanted to do our part to make this process easier and worry-free for families with kids dealing with these types of deformities and the surgeries that go along with them."

Lindsey added that the event has grown over the years by the number of racers as well as the number of cleft patients involved. "The first year, we had one cleft patient show up to participate. This year we had five cleft families in attendance. This support warms my heart and makes the work that it takes to put on this race so worth it!"

Despite the stormy weather forecast and tornadoes that had hit the area, 88 people crossed the finish line of this year's 3 Miles for Free Smiles race and \$12,000 was raised for the LSU Health Shreveport Foundation and Shriners Hospitals for Children in Shreveport.



"To say I was pleased with the turn out would be an understatement!" said Lindsey. More than \$30,000 has been raised since the first 3 Miles for Free Smiles race in 2016. Thank you to everyone who participated in and sponsored this wonderful event for our community and patients! We are already looking forward to next year.

"Reel in the Big One" Cleft Camp

With the help of proceeds from 3 Miles for Free Smiles and the Rains Family, the Oral & Maxillofacial Surgery Department Cleft Team hosted the first annual "Reel in the Big One" Cleft Camp in Frierson, Louisiana for their patients to enjoy a day of fun, fishing and making new friends!



AN EVENING FOR

HEALERS

MAY 2, 2019

Presented by:



Ochsner®
Health System

The 9th annual *An Evening for Healers* took place on May 2 at the Shreveport Convention Center. *An Evening for Healers* celebrates the emergency responders, physicians and healthcare professionals who provide healing care to patients in our area. Proceeds from the event support the Chancellor's Fund for Excellence, which helps meet LSU Health Shreveport's greatest needs. Thank you to Dr. Ed and Mary Pat Morgan for chairing this year's event, our healers and heroes, and everyone who attended this special evening.

Special thank you to our *An Evening for Healers* 2019 patients for allowing us to share their remarkable rescue and recovery stories, and honor their healers and heroes.

Kelley Wyatt and Family
Hometown: Bossier City, LA

Taylor Ferrier and Family
Hometown: Campti, LA

Martha Wilson and Family
Hometown: New Orleans, LA



Special Thank You

to the generous underwriters and sponsors who made
An Evening for Healers 2019 possible!

PRESENTING SPONSOR



DEAN SPONSOR

Lindsay & John Atkins

EVENT UNDERWRITERS



Welcome Reception
Sponsor



Medal Sponsor

Joseph C. Jones, MD
WKHS/Promise Hospitals

Invitation Sponsor



Healer Honoree
Sponsor



Valet Sponsor

LIFETIME SPONSOR

The Kinsey Family
Moffitt Volkswagen, Moffitt Mazda,
Audi Shreveport, Porsche Shreveport,
and the Moffitt Family

CHAIRMAN SPONSOR

LSUHS Dept. of Anesthesiology
Hand Construction
Dr. Andy Mack
MST Consulting / Southeastern Dental
Riverbend Rehabilitation of Louisiana
Laveer Wealth Management, Kevin Murphy CFP

PROFESSOR SPONSOR

Dr. Ed and Mary Pat Morgan
Medic Pharmacy
Dr. and Mrs. Lacy Williams
Lynn & Armand Roos, Connie & Donald Posner
Frances and Bill Comegys
Drs. Carol and David Clemons
LSUHS Dept. of Oral & Maxillofacial Surgery
LSUHS Dept. of Obstetrics & Gynecology
Life Air Rescue
Sid Potts, Inc.
Mr. and Mrs. David B. Means, III
R. Keith White, MD - LSUHS Division of
Cardiothoracic and Vascular Surgery

ASSOCIATE PROFESSOR SPONSOR

Dr. Dennis Wissing & Dr. Sharon Dunn,
LSUHS School of Allied Health Professions
Snell's Orthotics and Prosthetics
Mr. and Mrs. Robert Redstone
Navdeep Samra, MD
Dr. George & Mrs. Katy Merriman,
Dr. Michael & Mrs. Denise Durci
Drs. Glenda and Chris Kevil
Lila and Tyler Daniel, Terri Nelson

ASSISTANT PROFESSOR SPONSOR

Cross Keys Bank
Keith D. Peterson & Co., Inc.
Citizens National Bank
LAMMICO
Blue Cross and Blue Shield of Louisiana
Bruce and Betty Henderson
Dr. Lee Abraham, III
Leigh and Kevin Flood
The Powers Foundation
Nancy Germany, MD
Romp and Pou Agency
Adkins Seale Capital Management, LLC
Feist-Weiller Cancer Center
Pete and Stephanie Tucker
Gastrointestinal Specialists, AMC
Martha Fitzgerald
Red River Bank
Dermatology & Skin Surgery

Leonard W. & Betty Phillips Foundation
Heard McElroy & Vestal
CRM Studios

Dr. James and Mrs. Catherine Lusk
River Cities Interventional Pain Specialists
Randall Brewer, MD

Kathy and Bubba Rasberry
The Orthopaedic Clinic
LSU Health Shreveport Class of 1973
LSUHS Dept. of Orthopaedic Surgery
Prevot Design Services, APAC

Marianne and Stafford Comegys
The Parish of Caddo
LA Family Medicine Clinic
Dr. Nabil and Mrs. Hanan Moufarrej
JP Morgan

Shreveport-Bossier New Car
Dealers Association

Southern Research Company -
Tom and Sheryl Ostendorff

LSUHS Section of Pulmonary &
Critical Care Medicine

Drs. John and Diane Wagner
Querbes & Nelson

LSUHS Dept. of Otolaryngology/
Head & Neck Surgery
Campus Federal Credit Union
SWPECO

Robert Poindexter, in loving memory of Kimberly
Marie Cotter Poindexter

Save the date! An Evening for Healers 2020 is May 7

Class Notes

Fallon Strother McManus, MD (*School of Medicine, Class of 2009*) was promoted to Chief Medical Information Officer at Lafayette General Health. Dr. McManus is a graduate of LSU and LSU Health Shreveport. She completed her residency at LSU Health New Orleans. Dr. McManus began her career in medicine at Lake Charles Memorial Hospital and later practiced family medicine in Shreveport.

Susan M. Bankston, MD, FAAP (*School of Medicine, Class of 1988*) was listed in the "America's Best Physicians" registry for 2019. Selections were made by the National Consumer Advisory Board, an organization that identifies top professionals in their fields. Dr. Bankston practices Pediatrics at The Baton Rouge Clinic,

a multi-specialty medical practice with doctors in over 15 specialties. She completed her Pediatric Residency at LSU Health Shreveport. She is Board Certified and a Fellow of the American Academy of Pediatrics.

Darrell Barnett, MD (*School of Medicine, Class of 1982*) was named Pediatric Director of the Pediatrics & School Based Health Centers for David Raines Community Health Centers. David Raines Community Health Centers, headquarters in Shreveport, provides quality and affordable primary care services since while expanding access to services at six clinic locations in five cities throughout northwest Louisiana.

Kimberly Meiners, MD (*School of Medicine, Class of 2002*)

joined the staff of Lane Family Practice in Zachary, Louisiana. Dr. Meiners has more than 14 years of experience as a family medicine physician. She completed her residency training in Family Medicine at St. Vincent's Family Medicine Residency in Jacksonville, Florida, and is board certified in both Family Medicine and Integrative Medicine.

T. Steen Trawick, MD (*School of Medicine, Class of 1997*) was named CEO of CHRISTUS Shreveport-Bossier Health System, effective August 12, 2019. Dr. Trawick completed his residency in Internal Medicine and Pediatrics at LSU Health Shreveport. He has served as past President of Shreveport Medical Society, and currently serves as a member of the Governor's advisory board for Physician Assistants and Vice Speaker of the House of Delegates for the Louisiana State Medical Society. He is a former member of LSU Board of Supervisors and Louisiana State Board of Regents.

Joseph T. (Tod) Guidry, PhD (*School of Graduate Studies, Microbiology and Immunology, Class of 2019*) was awarded a Science Policy Fellowship by the American Association of Cancer Research (AACR). This is the first time that the AACR has awarded such a fellowship. Dr. Guidry will rotate through AACR's Office of Science Policy & Governmental Affairs, Congressional offices, NCI, FDA and possibly the AACR headquarters in Philadelphia. Some of his duties will include analyzing policies of importance to the cancer research community and

summarizing them for various audiences, drafting policy position statements, and writing articles for the public.

Aimee Vozenilek, PhD (*School of Graduate Studies, Microbiology and Immunology, Class of 2019*) was named an ORISE (Oak Ridge Institute for Science and Education) Fellow at the FDA, where she will work on projects to improve bacterial polysaccharide vaccines for use in children.

Billy Reid McBay, MD, joined Conway Medical Group, a Conway Regional Primary Care Clinic in Conway, Arkansas. Dr. McBay completed his residency in Family Practice Medicine at LSU Health Shreveport and has more than 29 years of experience as a family medicine specialist.

Dana C. Covey, MD, received the 2019 William W. Tipton Jr, MD, Leadership Award from the American Academy of Orthopaedic Surgeons (AAOS) in recognition for his outstanding leadership and service to the orthopaedic community and patients, both in the United States and abroad. Dr. Covey completed his internship and residency in Orthopaedic Surgery at LSU Health Shreveport and is currently a clinical professor at the University of California in San Diego.

Audrey Rose Lewkowitz, PA-C (*School of Allied Health Professions, Master of Physician Assistant Studies, Class of 2017*) joined CHRISTUS Primary Care Partners - Shreveport-Bossier. Audrey has worked in Internal and Family Medicine since graduating where she enjoys treating acute illnesses, chronic conditions related to cardiovascular disease, and providing preventative care to patients of all ages.

Stay Connected:

We'd love to hear from you! To share a professional or personal note, or update your email and mailing address, visit www.lsuhsfoundation.org/alumniupdate.

School of Medicine:
Mary Cobb, Director of Alumni Affairs
(318) 675-6065 | mcobb@lsuhsc.edu

School of Allied Health Professions:
Valorie Lurry, Director of Student Life and Alumni Affairs
(318) 813-2898 | vlurry@lsuhsc.edu

School of Graduate Studies:
(318) 675-7674 | shvgraduatestudies@lsuhsc.edu

Find us on 

@LSUHSCShreveportMedicalAlumni
@LSUHealthShreveport
@lsuhscgraduatestudies
@LSUHealthSAHP

SCHOOL OF MEDICINE ALUMNI EVENT IN MONROE

On April 25, a group of LSU Health Shreveport Medical Alumni enjoyed an evening of fun, fellowship, and food at a gathering in Monroe. The event was hosted by Dr. Jane Mickey and her spouse, Gus Campbell, in their beautiful Bayou Desiard home.

Special guests included Chancellor Dr. G. E. Ghali, beloved faculty member Dr. David Desha, longtime alumni champion Marianne Comegys, and Dean of the School of Medicine Dr. David Lewis. Thank you to all who attended!



PHYSICIAN ASSISTANT ALUMNI EVENT IN BATON ROUGE

The School of Allied Health Professions hosted a social event for Physician Assistant alumni, current students, and prospective students at Red Stick Social in Baton Rouge on July 19. The event was also a great way to kick-off celebrating the 25th year of the Physician Assistant Program at LSU Health Shreveport!



SPRING ALUMNI REUNION WEEKEND HONORING THE SCHOOL OF MEDICINE CLASSES OF 1974 & 1979



See more photos on the Medical Alumni Facebook page: www.facebook.com/LSUHSCShreveportMedicalAlumni

Fall Alumni Reunion Weekend

HONORING THE SCHOOL OF MEDICINE
CLASSES OF 1989, 1999 & 2009

FRIDAY, SEPT. 27 & SATURDAY, SEPT. 28

Visit www.lsuhsfoundation.org/alumni
to register and view the weekend's schedule.
There is a room block reserved at the Hilton Shreveport Downtown.

Graduating Medical Students Celebrate Match Day

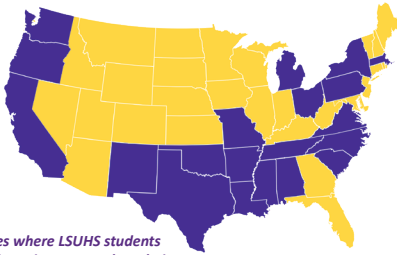


This year's NRMP Main Residency Match® was the largest in history:

- **Record-high of 38,376 applicants who submitted program choices**
- **35,185 positions available, the most ever offered in the Match**
- **Available first-year (PGY-1) positions increased by 6.5% from 2018**
- **98.3% of LSUHS School of Medicine students matched to a PGY-1 position**
- **100% of PGY-1 positions available at LSU Health Shreveport were filled**



Many students will be staying in the state of the Louisiana for their residencies: 22% of students will be staying in Shreveport, and 47% of students will be staying in the state of Louisiana. Prestigious out-of-state residency programs students matched to include Harvard University, University of Massachusetts, Wake Forest, University of Virginia, Mt. Sinai, Temple University, UT Southwestern, Baylor University, Oregon Health and Science University, and University of Alabama-Birmingham.



States where LSUHS students will be going to complete their residency training.

"Match Day is a day a medical student never forgets as it determines a key step in their goal of becoming a practicing physician. I am so proud of our students, as well as our dedicated faculty, for delivering another successful match. It is gratifying to see a large number of students electing to stay in Shreveport to continue their training. I know those staying, as well as those accepting residencies around the U.S., will represent LSU Health Shreveport well, strengthening our reputation for outstanding medical education," said Dr. David Lewis, Dean of the School of Medicine.

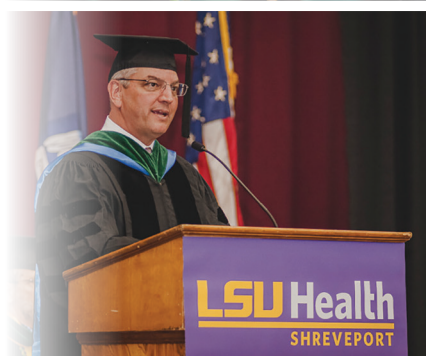
Congratulations, Class of 2019!

On Saturday, May 25, 193 LSU Health Shreveport students celebrated a great accomplishment in their education and pursuit of a career in the medical field by graduating with a Bachelor's, Master's, PhD, or Doctorate degree.

Twelve students received a PhD or Master's degree from the School of Graduate Studies; 62 students received a Bachelor's, Master's or Doctorate from the School of Allied Health Professions; and 119 students graduated from the School of Medicine with their Doctor of Medicine degrees.

Louisiana Governor John Bel Edwards gave the keynote commencement address.

LSU President F. King Alexander and members of the LSU Board of Supervisors also traveled to Shreveport to attend the graduation ceremony and confer degrees.



NEW & NOTEWORTHY

LSU HEALTH SHREVEPORT WEBSITE GETS A NEW LOOK

To go along with the new school year starting and seeing many new faces on campus, the LSU Health Shreveport website got a much-needed makeover. LSUHS partnered with Finalsity, a digital marketing and communications platform company with extensive experience working with education clients, to make the plans for a new website a reality. The new look of www.lsuhshealthshreveport.edu is interactive, responsive to various devices, vibrant and offers many new resources for prospective students, residents, fellows, and faculty, job seekers, and patients.

"We wanted the website to represent online what it's like to be on campus in person - welcoming, professional and thriving. Our website is our 'digital window to the world' that should be inviting and easy to navigate for visitors," said Lisa Babin, Executive Director of Public Affairs and Communications. "This project was a huge undertaking that would not have been possible without the help of our faculty, staff, residents, fellows, students, website manager Julia Foley Bey, and the support of Chancellor G.E. Ghali and Dean Lewis. We are proud to share more about our mission, vision, achievements and growth online. I encourage our students, faculty, staff, alumni and community supporters to visit often and see what is new."

Explore the new site at: www.lsuhshealthshreveport.edu

GOLD HUMANISM HONOR SOCIETY INDUCTEES

Congratulations to the Gold Humanism Honor Society Class of 2020 Inductees! The new members were inducted at the White Coat Ceremony in March.

Student Inductees:

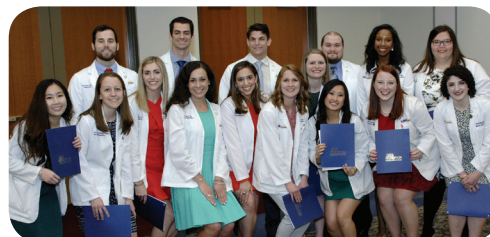
Madison Buras	Tina Phan
Lauren Cooper	Tierra Range
Daniel Core	Logan Roka
Blair Davis	Collette Tilly
Fehima Dawy	Jacqueline Van Gheem
Claire Franklin	Brooke Wilmore
Phillip Holly	Travis Wilmore
Amber McKenna	Nicolas Zaunbrecher
Katie Moreaux	
Younna Moufarrej	
Chi Nguyen	
Anne Lee Parsiola	

Resident Inductees:

Dr. Sara Adams
Dr. Caitlin Busada
Dr. Caleb Dupre
Dr. Nicholas George
Dr. Lauren McCalmont
Dr. Jacob Sandoz

Faculty Inductees:

Dr. Mila Shah-Bruce
Dr. Navdeep Samra
Dr. Wanda Thomas
Dr. R. Keith White



LSUHS RECOGNIZED BY JUNIOR ACHIEVEMENT



Congratulations to our Junior Achievement of North Louisiana award recipients! Awards were presented at the 2019 JA ROI Showcase and JA Volunteer & Student Recognition Luncheon on May 7. The School of Medicine and School of Allied Health Professions received the New Volunteer Group Award. The School of Allied Health Professions Physician Assistant Program also received a Community Impact Award.



Community Impact Award: Dennis Wissing, PhD, Associate Dean for Academic Affairs, School of Allied Health Professions; Lindsay Ferrington, PA-C, Clinical Instructor, Physician Assistant Program; and Madeline Barclay, MPH, School of Allied Health Professions Director of Admissions and Records.

New Volunteer Group Award: LSU Health Shreveport School of Medicine and School of Allied Health Professions (Amanda Bernard, DPT, Director of Clinical Education, Physical Therapy Program, and Lisa Babin, Executive Director of Public Affairs, Communications and Development).

SHREVEPORT ST. JUDE AFFILIATE CLINIC UNDERGOES RENOVATION

The St. Jude Children's Research Hospital Affiliate Clinic in Shreveport reopened in March after undergoing a renovation and expansion. The Shreveport Affiliate Clinic underwent a six-month renovation and expansion to be able to treat more patients locally, and to improve the patient's experience while they are receiving treatment. The Shreveport Chamber of Commerce conducted the official ribbon cutting for the clinic. Located at the Ochsner LSU Health Shreveport Feist-Weiller Cancer Center, the St. Jude Shreveport Affiliate Clinic gained an additional 1,970 square feet of space adding two new exam rooms, two new treatment chairs, a physician dictation room and medication rooms.

"We are honored to be affiliated with St. Jude Children's Research Hospital and to have the opportunity to provide world-class care to our shared patients, saving families from our region the time and strain of traveling long distances to receive a portion of their required treatments," said **Dr. Majed Jeroudi**, Associate Professor of Clinical Pediatrics and Medical Director of the St. Jude Affiliate Clinic.

"The improvements and additions to the Shreveport Affiliate Clinic will enhance the treatment experience of our patients and add to the resources available to our patients and their families. The expanded clinic space will allow our team to continue providing exceptional care, as well as improve our ability to treat more patients efficiently," added **Dr. Joseph Bocchini**, Professor of Pediatrics at LSU Health Shreveport.

The Shreveport Affiliate Clinic has a dedicated staff comprised of two pediatric hematologists/oncologists, an advance practice nurse, chemotherapy-certified pediatric nurses, a medical office assistant, a clinical research associate, and a social worker. The clinic also has access to the Child Life Department at the Ochsner LSU Health Shreveport. Dr. Majed Jeroudi, Associate Professor of Clinical Pediatrics at LSU Health Shreveport, is the clinic's Medical Director. **Dr. Elizabeth Wadhwa** recently joined the Department of Pediatrics as our second pediatric hematologist/oncologist, will also care for patients in this new clinic.

"The vision of the St. Jude Affiliate Program is to extend the mission of St. Jude beyond the walls of Memphis. St. Jude Children's Research Hospital is a remarkable place of innovation with a legacy of success that helps us achieve the extraordinary for children with cancer and blood diseases. Our colleagues in Shreveport contribute to the mission by providing children access to St. Jude clinical trials close to home. We are thrilled that our St. Jude patients from Shreveport will benefit from this beautiful new clinic," said Dr. Carolyn Russo, Medical Director, St. Jude Children's Research Hospital Affiliate Program.

The St. Jude Affiliate Program is a network of pediatric hematology-oncology clinics, hospitals, and in some cases universities, united to extend the mission of St. Jude. The physicians and staff at these sites work in collaboration with the staff at St. Jude to deliver state-of-the-art care and innovative clinical trials to children with cancer and blood disorders. The affiliation between St. Jude Children's Research Hospital and LSU Health Shreveport became official on Oct. 1, 1995, and it allows St. Jude patients to receive a portion of their medical care at home, reducing the stress of travel and helping maintain a sense of normalcy for pediatric patients and their families. The Shreveport Affiliate Clinic, one of eight St. Jude affiliate clinics throughout the United States, is a joint effort of St. Jude Children's Research Hospital in Memphis, the LSU Health Shreveport Department of Pediatrics, Feist-Weiller Cancer Center and Ochsner LSU Health Shreveport. The clinic serves pediatric patients from Northwest Louisiana, Southwest Arkansas, and Northeast Texas with cancer and hematologic disorders.



LSU DAY AT THE CAPITOL

LSU Day at the Capitol is an annual event that brings together all LSU campuses to share their strengths, programs, research initiatives and economic impact around the state with Louisiana legislators. LSU Health Shreveport faculty and students attended and participated in the LSU Day Health Fair.

Sharon Dunn, PT, PhD, OCS, and **A. Wayne Orr, PhD**, were honored with concurrent resolutions by the Louisiana House and Senate at LSU Day for their contributions to clinical care, research and training of faculty.



PLAYGROUND OPENS AT MOLLIE E. WEBB

The **Mollie E. Webb Speech and Hearing Center** recently opened a new playground area for patients and their families to enjoy. The playground will also be a perfect place for kids to practice the speech and hearing skills that they learn in the classroom.

Special thank you to these donors for their support of the new playground at Mollie E. Webb: **Rossi Enterprises, Pay It Forward Networking, GSS Construction & Oilfield Supply, Family of Brody Robinson, The McGuirt Family, The Fite Family, and the Campbell Monument Company.**

The Mollie E. Webb Speech and Hearing Center was established in 1974 and offers help to people who need to improve their speech and language skills. The Center operates within the LSU Health Shreveport School of Allied Health Professions Department of Rehabilitation Sciences.



STROKE CENTER RECEIVES AHA AWARDS

The Stroke Center at Ochsner LSU Health Shreveport Academic Medical Center was awarded the Gold Plus Quality Award and Target: Stroke Honor Roll Elite Plus Award by the American Heart Association. The Stroke Center is led by LSU Health Shreveport faculty members **Oleg Chernyshev, MD**, Associate Professor of Neurology and Sleep Medicine, and **Hugo Cuellar, MD, PhD, DABR**, Associate Professor of Neurosurgery and Director of Neurointerventional Surgery. Target: Stroke Honor Roll Elite Plus is the American Heart Association's highest designation level and the Gold Plus Quality Award recognizes medical centers with the most exceptional stroke care and treatment with the most up-to-date scientific guidelines. Congratulations to Dr. Cuellar, Dr. Chernyshev and their entire Stroke Center team on this outstanding accomplishment!



VANCHIERE RECEIVES ALLEN A. COPPING AWARD

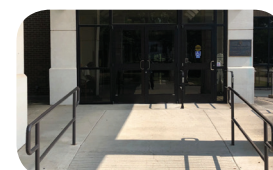


John A. Vanchiere, MD, PhD, Professor of Pediatrics, Chief of Pediatric Infectious Diseases and Vice Chair of Pediatric Research, received the Allen A. Copping Excellence in Teaching Award for Clinical Science at LSU Health Shreveport's graduation ceremony in May. Dr. Vanchiere has been active in the education of students and residents since joining the LSUHS faculty in 2007. Letters of support from students and residents praised Dr. Vanchiere for his "ability to inject humor into discussion to break up monotony, and present information in a coherent and logical manner that is also memorable and enjoyable," as well as his "admirable ability to connect with his patients and their families so effortlessly." The Allen A. Copping Excellence in Teaching Award is given each year to selected individuals who are "uniquely gifted in imparting knowledge, possess a lifelong quest for discovery, lead by example, foster a sense of caring and compassion, and inspire the young men and women in whose capable hands will rest the health and well-being of the people of Louisiana." Recipients are nominated by students and peers, and are chosen by a committee their leaders, colleagues and students based strictly on their academic teaching. The Allen A. Copping Excellence in Teaching Award is given at both LSU system medical school campuses in Shreveport and New Orleans, and it is the highest teaching award in the School of Medicine. The award is named in honor of the late Dr. Allen A. Copping, former Chancellor of LSU Medical Center and President of the LSU System.

MUSLOW FAMILY MAKES THOUGHTFUL GIFT TO SAHP

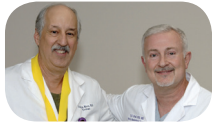
Thanks to a generous gift to the LSUHS Foundation from the Ike Muslow family, new safety rails have been installed outside of the south side entrance to the Allied Health Professions Faculty Clinic. Dr. Muslow had noticed several patients were having difficulty making it safely into the building. Always wanting to help others when he can, he made it possible for the safety rails to be put up so that patients would have an easier time getting from their vehicle to the clinic entrance.

"The Muslows have always been so supportive of our health sciences center and clinics. We are very grateful for their generous spirit and their gift that will help enhance a patient's experience before they even enter the clinic," said Dr. Sharon Dunn, Dean of the School of Allied Health Professions.



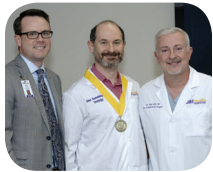
PROFESSORSHIP RECOGNITIONS

EUGENE ST. MARTIN, MD PROFESSOR IN UROLOGY



John Mata, MD, was recently recognized as the Eugene St. Martin, MD Professor in Urology. Dr. Mata serves as Professor of Urology and specializes in Pediatric Urology, the only pediatric urologist in the area. Dr. Mata was raised in San Antonio, Texas and received his Bachelor of Science and Doctorate of Medicine degrees from Northwestern University in Evanston, Ill. He continued his training in Urology as a resident at Baylor College of Medicine in Houston. Dr. Mata has been a faculty member at LSU Health Shreveport since 1986. Pictured left with Dr. Mata are Dr. Eugene St. Martin's daughters, Charlean St. Martin and Celeste Wedgeworth, in front of Dr. St. Martin's picture, which hangs in a place of honor and distinction in the Department of Urology.

BURDETTE E. TRICHEL, MD PROFESSOR OF UROLOGY



Alex Gomelsky, MD, was recently recognized as the Burdette E. Trichel, MD Professor of Urology. Dr. Gomelsky currently serves as a Professor of Clinical Urology and the Chairman of the Department of Urology. He is also the Program Director of the Urology Residency Program. Originally from Greenbelt, Maryland, Dr. Gomelsky received his Bachelor of Arts dual degree in Natural Sciences and Russian from The Johns Hopkins University, and earned his Doctorate of Medicine from The University of Maryland School of Medicine. He went on to complete his residency at Northeastern Ohio Universities College of Medicine in Akron, Ohio, followed by a fellowship in Female Urology and Pelvic Floor Reconstruction from Vanderbilt University Medical Center. Dr. Gomelsky is well-known nationally for his expertise in the field of female urology and has been an LSU Health Shreveport faculty member since 2004.

MINGYU DING MEMORIAL ENDOWED PROFESSORSHIP IN MICROBIOLOGY



Rona S. Scott, PhD, has been appointed the Mingyu Ding Memorial Endowed Professorship in Microbiology. This is the only Basic Science Endowed Professorship. Dr. Scott has direct ties to Dr. Mingyu Ding, who she trained as an incoming graduate student and mentored him while still working in Dr. Sixbey's laboratory. Dr. Scott is a leader in the study of epigenetic imprints by transient infection with the DNA tumor virus EBV. She is also investigating the synergy of EBV with another tumor virus, HPV16, in the development of oropharyngeal squamous cell carcinoma. She is nationally and internationally well-recognized and, as a consequence, is well funded by extramural grants. She is the Director of the Genomics Core, which is housed in the Research Core Facility. She has been instrumental in establishing this core facility and the associated data processing and analysis. This core has been established as part of the NIH-funded Center for Molecular and Tumor Virology, and has received significant funding for the set up and operation. This resource has become an essential component of LSU Health Shreveport and is being used by researchers across the institution and externally.

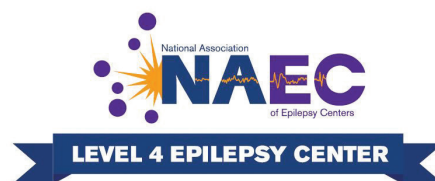
JACK W. POU, MD ENDOWED CHAIR OF OTOLARYNGOLOGY/HEAD & NECK SURGERY and DR. CHERIE-ANN O. NATHAN, MD ENDOWED PROFESSORSHIP



Cherie-Ann Nathan, MD, FACS, and **Paul Weinberger, MD**, were recognized at an investiture ceremony in June. Dr. Nathan is the Jack W. Pou, MD Endowed Chair of Otolaryngology/Head & Neck Surgery. She is also the Director of Head & Neck Surgical Oncology at Feist-Weiller Cancer Center and has received funding from the National Cancer Institute for her translational research since 2000, which is focused on targeted therapy for head and neck patients. Dr. Paul Weinberger holds the Dr. Cherie-Ann O. Nathan, MD Endowed Professorship in the Department of Otolaryngology/Head & Neck Surgery. Dr. Weinberger is also the Director of the ArkLaTex Center for Voice Airway and Swallowing and is the only subspecialty fellowship-trained laryngologist in the region. Dr. Jack Pou was a beloved faculty member who helped bring the medical school to Shreveport and started the Otolaryngology/Head and Neck Surgery Residency Program. He left a lasting impact on his patients, residents, and the entire community and his legacy continues through this endowment. In attendance at the ceremony were Drs. Bipin and Dashka Turakhia and Dr. Peggy Murphy, two of the major donors to the Cherie-Ann O. Nathan Endowed Professorship.

OCHSNER LSU HEALTH SHREVEPORT REGIONAL EPILEPSY CENTER RECEIVES NATIONAL ACCREDITATION

The National Association of Epilepsy Centers (NAEC) recently accredited the Ochsner LSU Regional Epilepsy Center as a Level 4 Epilepsy Center.



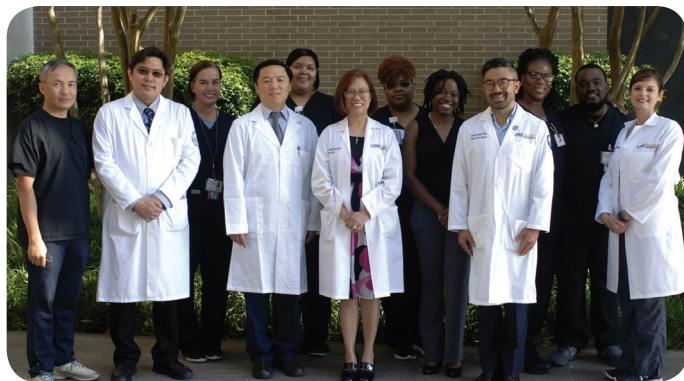
The Epilepsy Surgery program is a collaboration between members of the departments of Neurosurgery and Neurology at LSU Health Shreveport. Hai Sun, MD, PhD, FAANS, Assistant Professor of Neurosurgery, Director of the Ochsner LSU Regional Epilepsy Center, and Rosario Maria S. Riel-Romero, MD, FAAP, FAAN, FACNS, Professor of Neurology and Pediatrics, Co-Medical Director of the program and Director of Child Neurology and the Epilepsy Monitoring Unit, jointly lead the program. Peimin Zhu, MD, PhD, and Jayson Rodriguez, MD, are the two other board-certified epileptologists in the program. Additional LSU Health Shreveport faculty who are active members of the program include Christina Notarianni, MD, FAANS, Associate Professor of Neurosurgery and Director of Pediatric Neurosurgery; Eduardo Gonzalez-Toledo, MD, Professor of Radiology; and Christina Ledbetter, PhD, Fellow in the Department of Neurosurgery. Credit also goes to the center's team of electroencephalogram (EEG) techs, which is headed by Alena Stevens.

The NAEC has four levels of epilepsy care and accredits centers that meet criteria to be a Level 3 or Level 4, which provide specialized epilepsy care. By the NAEC definition, a Level 4 center provides more complex forms of intensive neurodiagnostic monitoring, as well as more extensive medical, neuropsychological, and psychosocial treatment than a Level 3 center can provide. Level 4 centers also offer complete evaluations for epilepsy surgery and perform more complex epilepsy surgeries.

The Regional Epilepsy Center at Ochsner LSU Health Shreveport Academic Medical Center is the only facility in North Louisiana with Level 4 NAEC accreditation and the resources to care for epilepsy patients in need of more specialized care. Epilepsy is a neurological disorder that causes seizures and affects approximately 10,000 people in the region. The Centers for Disease Control and Prevention (CDC) reports that there are about 3.4 million people in the U.S. with epilepsy.

"I am extremely honored to be recognized by the National Association of Epilepsy Centers with the Level 4 designation," said Dr. Sun. "Since becoming Director of Epilepsy Surgery three years ago, I was committed to expanding our epilepsy services at the hospital and to provide access to high-level care to patients in our community who have complex neurological conditions such as epilepsy and seizure disorders. Having a NAEC Level 4 designation means that we are able to provide the most acute and comprehensive care for epilepsy patients, and it also enhances the training of our LSU Health Shreveport Neurosurgery and Neurology residents to become the next generation of epilepsy specialists."

"The accreditation of the Epilepsy Center is a tremendous accomplishment that was made possible only by the hard work, dedication, and commitment of the individual members of our Epilepsy team. Our team is driven by the common vision and goal of providing the best possible care to our patients, and to ensure the best possible surgical outcome to those who suffer from medically refractory seizures. We are very proud to have been able to come this far, and to be able to offer this service to the people in our community and north Louisiana," said Dr. Riel-Romero.



Pictured (L to R): Y. Eric Tran, Dr. Jayson Rodriguez, Alena Stevens, Dr. Peimin Zhu, LaTonya Lowe, Dr. Rosario Maria S. Riel-Romero, Towana Berryman, Shantaneil Alexander, Dr. Hai Sun, Ruthie Monroe, Aries George, and Kristie O'Glee. Not pictured: Dr. Christina Notarianni

Physicians committed to setting a national agenda for quality epilepsy care founded the NAEC, a non-profit association, in 1987. Today, the NAEC has a membership that includes more than 230 specialized epilepsy centers throughout the United States, and it continues to develop standards of epilepsy care and educate various interest groups about the complexities of and need for patient access to specialized epilepsy services.

FACULTY HONORS & ELECTIONS



Sharon Dunn, PT, PhD, OCS, was named Dean of the School of Allied Health Professions.



Debbie Chandler, MD, was named Associate Dean of Student Affairs and Diversity Affairs for the School of Medicine.



Cherie-Ann Nathan, MD, FACS, was inducted as the President of the American Head and Neck Society (AHNS). Dr. Nathan is only the second woman to serve as President of the American Head and Neck Society. Dr. Nathan was also nominated as President Elect of the Association of Academic Departments of Otolaryngology/Head & Neck Surgery (AADO – HNS),



Steven Bailey, MD, was named Chairman of the Department of Internal Medicine.



R. Shane Barton, MD, was installed as President of the Louisiana Orthopaedic Association (LOA).



Navdeep Samra, MD, FICS, FACS, was elected to become a member of the Society of University Surgeons (SUS).



Mary Jo Fitz-Gerald, MD, MBA, DLFAPA, FACP, FACLP, was elected to the American Psychiatric Association's Assembly and will serve a one-year term as Assembly Recorder.



Steven A. Conrad, MD, PhD, was awarded the status of Life Senior Member of the Institute of Electrical and Electronics Engineers (IEEE).



Norman Harris, PhD, was named Chairman of the Department of Molecular & Cellular Physiology.



Kenneth Abreo, MD, FASDIN, was honored as a Lifetime Achievement Award Recipient by the American Society of Diagnostic and Interventional Nephrology (ASDIN).



Julia Esparza, AHIP, began her term as President of the Medical Library Association (MLA).



Keith White, MD, was named Chairman of the Department of Surgery.



Pamela McPherson, MD, FAPA, was awarded the Physicians for Human Rights (PHR) 2019 Human Rights Hero Award and the 2019 Ridenhour Prize for Truth-Telling for her role in alerting Congress to the conditions in the U.S. Immigration and Customs Enforcement (ICE) family residential centers.



David Kaufman, MD, was named President of the Louisiana Society of Allergy, Asthma and Immunology (LSAAI).



Drew Mouton, MBA, MGM, was named Chief Innovation Officer in the Office of Research.



Bharat Guthikonda, MD, was named Chairman of the Department of Neurosurgery.



James Patterson, II, MD, PhD, was named Chairman of the Department of Psychiatry.



Leonardo Seoane, MD, FACP, Senior Vice President and Chief Academic Officer of Ochsner Health System, was named Associate Vice Chancellor of Academic Affairs for LSUHS.



Sami Bahna MD, DrPH, was recognized with a plaque for his contributions to the scientific program and long-term support to the Lebanese Society of Allergy & Immunology.



Diana Merendino, DPT, RRT, PT, RRT-NPS, RPFT, FAARC, was honored with the Terry Bourgeois Award of Excellence for her service and commitment to the respiratory therapy profession.



Arun Pramanik, MD, DCH, FAAP, FIAP, received the highest honor from the Indian Academy of Pediatrics, which included Honorary Fellowship and the Lifetime Achievement Award, for his services over the years to improve newborn and maternal care in India.



G. E. Ghali, DDS, MD, FACS, FRCS(Ed), was named to the American Cancer Society Louisiana Area Board of Directors and is the only north Louisiana Board member. Dr. Ghali was also selected as an American Cancer Society 2019 "Champion of Hope" Honoree.

In Memorium



RONALD KLEIN, PhD, Professor in the Department of Pharmacology, Toxicology and Neuroscience, passed away in March of 2019 at age 53. Dr. Klein joined the LSU Health Shreveport faculty in 2002 and his research work focused on therapeutic options for neurodegenerative diseases. He had strong compassion for patients who suffered with ALS, Parkinson's disease, Alzheimer's disease and traumatic brain injuries. His goal was disease modification based on the premise that better, more appropriate animal models would accelerate discovery. The driving force behind his research was his recognition that there was a need to expand the very limited therapeutic options for these diseases. Dr. Klein leaves a legacy as a consummate academician who made a difference in the lives of students, colleagues, LSUHS, and countless patients who will someday be impacted by his work.



JOAN BLONDIN, MD, retired Professor Emeritus of Nephrology, passed away on March 7, 2019, after complications from a fall. She was 82-years-old. Dr. Blondin joined the section of Nephrology at LSU Health Shreveport in 2000 and served until her retirement in 2018. She was known as a passionate teacher and a beloved mentor to her students, residents, Nephrology fellows and junior faculty. She was the recipient of the 2010 Allen A. Copping Award, the highest honor awarded to a LSU Health Shreveport faculty member. Dr. Blondin served as and greatly enjoyed being the Associate Program Director of the Medicine Residency Program, and the Director of the Ronald B. George Scholars in Medicine Program for freshmen medical students. She was not only active at our institution, but at the state, regional and national levels. A few of the organizations that meant a great deal to Dr. Blondin were serving as a member and ultimately chairman of the Louisiana Board of Regents, a member of the National Advisory Board on Domestic Violence for the American Medical Association, and on multiple committees of the American Society of Nephrology. Dr. Blondin was a dedicated teacher, an astute clinical researcher and a caring physician who will be greatly missed.

DAVID WILLIAM LAW, MD, passed away on April 30, 2019. Dr. Law was a graduate of Florien High School, Northwestern State University and the LSU School of Medicine in Shreveport. He was a successful doctor in Colleyville, Texas, and Springhill, Louisiana. He was a passionate, but even more importantly, a compassionate physician. Dr. Law cared for his patients and was invested in their well-being, but he also cared about them. He grieved for the patients, and their families, when all of his medical skills were not sufficient to save them. He was committed to his family, friends and co-workers, and was passionate and effusive about everything he did - his medical practice, hunting, fishing, farming, family and friendships.

CAMPUS & COMMUNITY



1



2



3



4

1 Dr. DeSha's Field Day, a fundraiser for the DeSha Endowment for the LSU Health Shreveport Foundation, took place at Great Raft Brewing and featured classic field day games include three-legged relay races, a balloon pop relay, ping pong ball on a spoon relay, water balloon toss, and tug-of-war. Music was provided by second year medical students Mason Triay, Matt Moss, Austin Labbe, and Blake LeBlanc along with special guests.

2 More than 40 people participated in Geaux Bald's annual Shave Day event and "braved the shave" to raise awareness and funds for childhood cancer research.

3 The AHEC Program Office hosted AHEC Scholars from LSU-Alexandria and Southern University Shreveport for a day this spring. AHEC Scholars are a select group of medical students and nursing students that are learning based on the IPE (inter-professional education) experience.

4 The "Unmasking Brain Injury" public awareness project and art display traveled to the School of Allied Health Professions in May. "Unmasking Brain Injury" encourages survivors of traumatic brain injuries to share their story through art by designing masks to help create awareness of the prevalence of brain injury.

5 The Science Matters - Shreveport student interest group hosted its third annual Interactive Day of Education & Awareness for Science (I.D.E.A.S.) event for children ranging in ages 4 to 17-years-old where LSU Health Shreveport, undergraduate and high school student volunteers performed 50 scientific demonstrations.

6 Dr. Steven Conrad, Director of Critical Care Medicine Service and Extracorporeal Life Support Service, explains ECLS therapies and demonstrates an extracorporeal membrane oxygenation (ECMO) machine to participants of the spring Mini Medical School session.



5



6



7



8



10



9



11



12



13

7 More than \$37,000 was raised by 93 donors for LSU Health Shreveport during the Community Foundation of North Louisiana's annual Give for Good Day. The School of Allied Health Professions hosted a Give for Good Bingo Night at Great Raft Brewing.

8 The 7th annual R.Tammy Fleming Walk to End Lupus was held on May 18 in Shreveport. LSU Health Shreveport rheumatologists were involved in planning the walk and creating awareness about lupus in our community. (Dr. Mamatha Katikaneni and Dr. Sarwat Umer with the Center of Excellence in Arthritis and Rheumatology pictured at the walk.)

9 Southfield School's 8th grade class visited LSU Health Shreveport for a field trip. They went on a tour of the School of Medicine, practiced skills that medical students learn with hands-on demonstrations in the Simulation Center, and visited a lab to learn about the importance of basic science and research.

10-11 More than 80 volunteers celebrated the first day of spring by dedicating their afternoon to clean up the Mollie E. Webb Speech and Hearing Center campus. The group planted flowers, trimmed trees, cleared sidewalks, painted pavers, and picked up trash along Tulane Avenue. Thank you to all of the volunteers, Shreveport Green, the many generous donors, and McCoy's Butcher Block of Stonewall for donating their time, talents, and materials to make the beautification project a success!

12 The LSU Health Sciences Foundation in Shreveport hosted Day of Gratitude events on campus, which was a chance for students, faculty and staff to show their appreciation for our community and alumni supporters.

13 The Resident Council and Louisiana State Medical Society hosted a Welcome Party and social at Marilyn's Place on June 25 for new House Officers.



1501 Kings Highway
PO Box 33932
Shreveport, LA 71130-3932

Nonprofit Organization
U.S. Postage
PAID
Shreveport, Louisiana
Permit No. 4

School of Medicine

School of Graduate Studies

School of Allied Health Professions

LSU Health Sciences Foundation Shreveport



Join us for the
FEIST-WEILLER
CANCER CENTER

LIFE SAVERS

DINNER AND FUNDRAISING EVENT

SATURDAY
NOVEMBER 2, 2019
CenturyLink Center

LOUISIANA SATURDAY NIGHT

Remembering ANNE HIGDON

DINNER & DANCING!

AUCTION • BANDS • OPEN BAR
CASUAL DRESS

Sponsorship opportunities:

CALL: Krista Gaston at (318) 813-1423

ONLINE: www.lsuhsfoundation.org/lifesavers19



**Life Savers supports cancer research
and treatment in North Louisiana**